
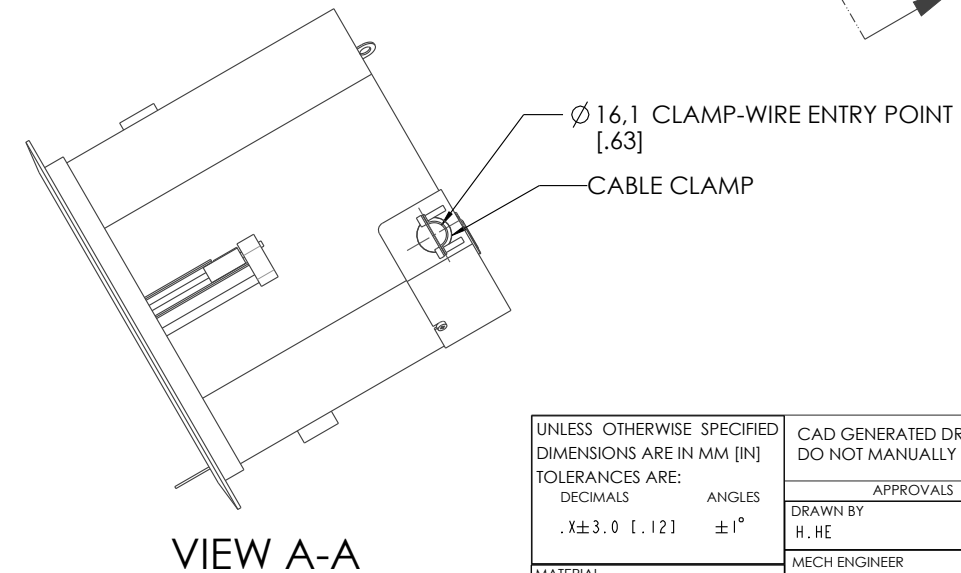
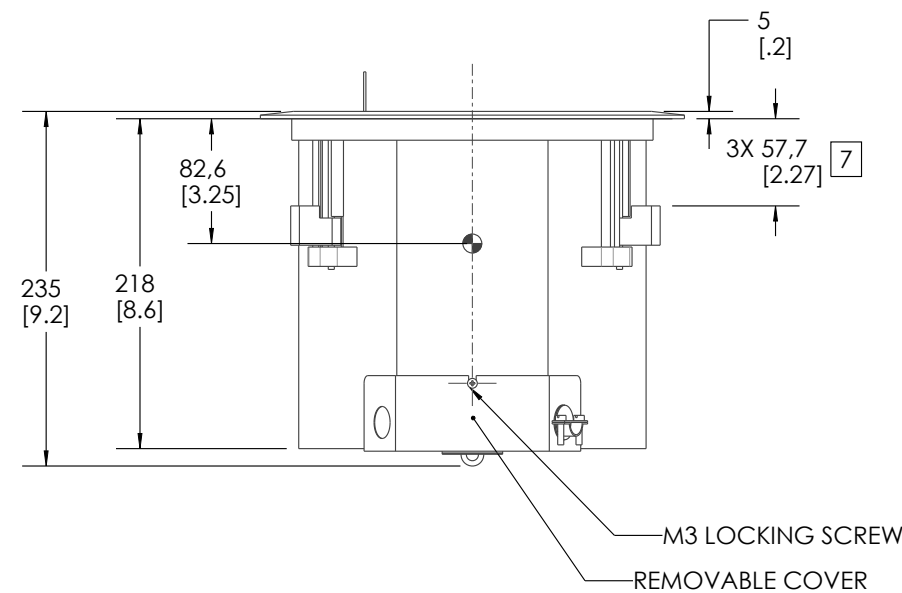
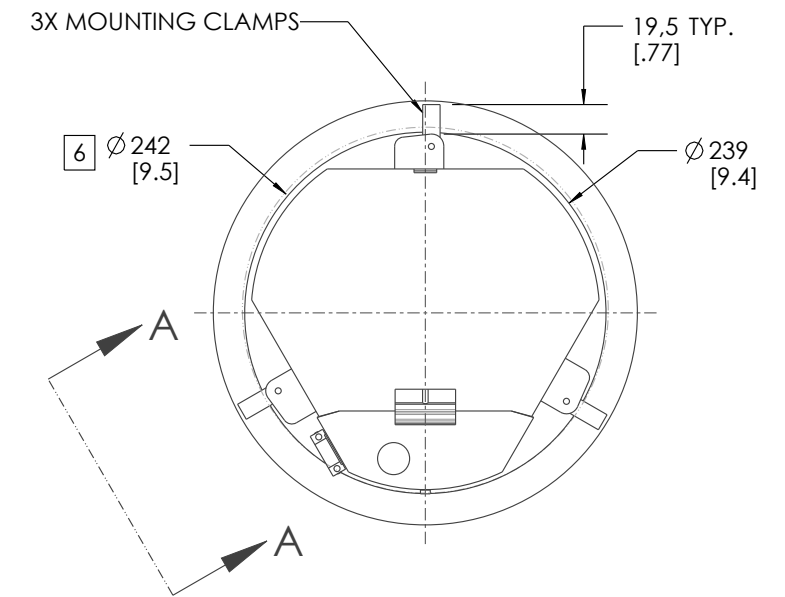
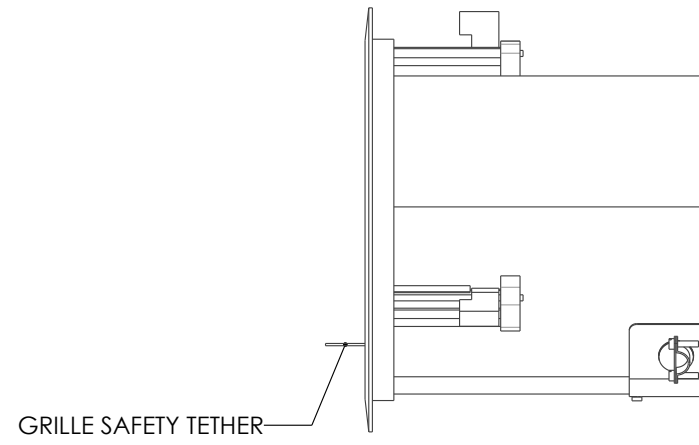
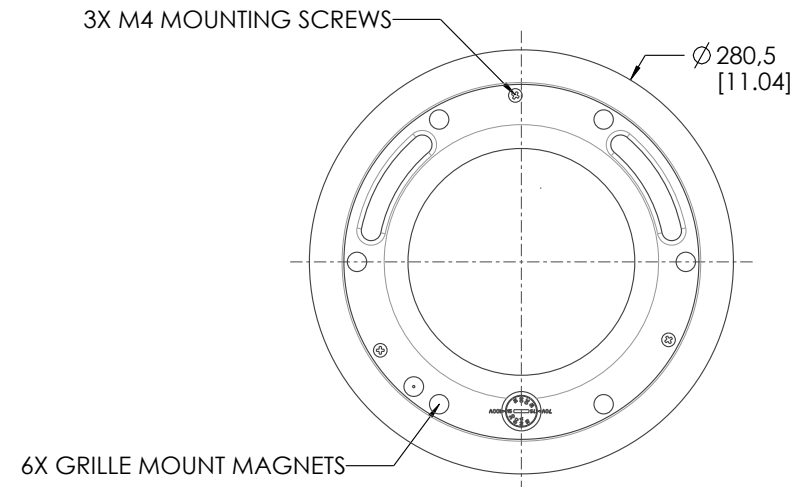
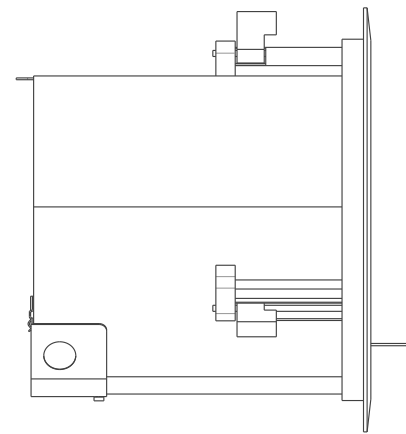
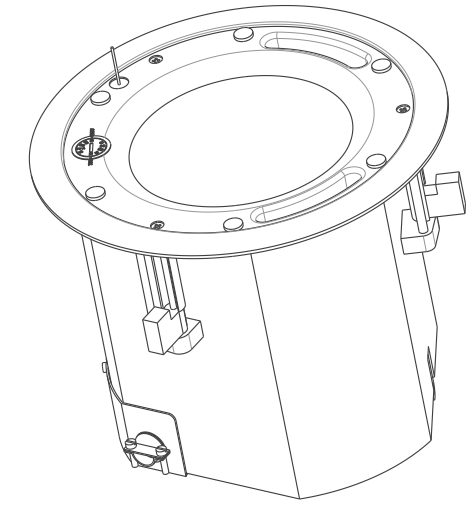
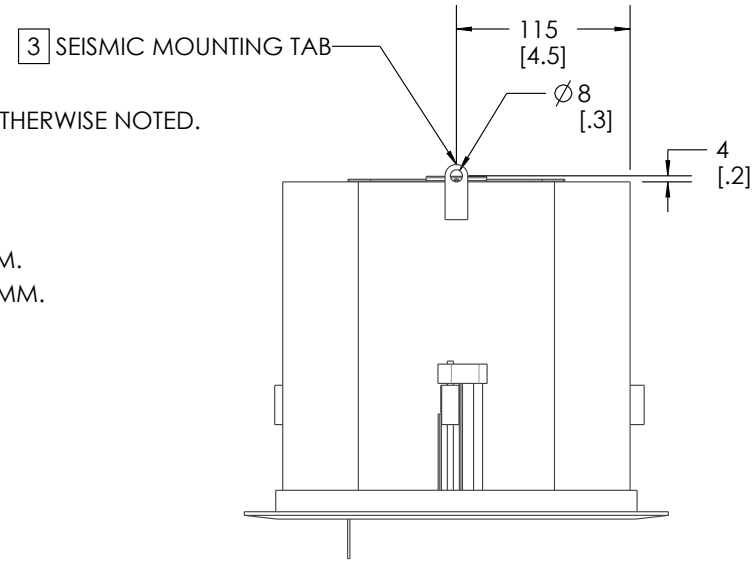


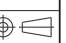
THIS DOCUMENT CONTAINS CONFIDENTIAL OR PROPRIETARY INFORMATION WHICH IS THE PROPERTY OF QSC, LLC, THAT MAY NOT BE DISCLOSED, REPRODUCED OR USED WITHOUT EXPRESS WRITTEN CONSENT FROM QSC, LLC. NO PORTION OF THIS DOCUMENT MAY BE REPRODUCED, REDISTRIBUTED, OR OTHERWISE DISCLOSED TO ANY THIRD PARTY WITHOUT QSC'S WRITTEN PERMISSION.

REVISION		BY	DATE
REV	DESCRIPTION		
A	RELEASE FOR SALES AND MARKETING	H.HE	4-MAR-22

NOTE: UNLESS OTHERWISE SPECIFIED.

- NET WEIGHT APPROX 6.07 KG [13.4 LBS].
- PARTS ARE SYMMETRICAL ABOUT CENTER LINES UNLESS OTHERWISE NOTED.
- SEISMIC MOUNTING TAB.
- SYMBOL  INDICATES CENTER OF GRAVITY.
- GRILLE NOT SHOWN FOR CLARITY.
- RECOMMENDED CEILING CUTOUT HOLE DIAMETER 242MM.
- MOUNTING CLAMP MAXIMUM MATERIAL THICKNESS 57.7MM.



UNLESS OTHERWISE SPECIFIED DIMENSIONS ARE IN MM [IN]		CAD GENERATED DRAWING DO NOT MANUALLY UPDATE		QSC QSC, LLC 1675 MACARTHUR BOULEVARD COSTA MESA, CA 92626 USA			
TOLERANCES ARE:		APPROVALS		LOUDSPEAKER, AD-C6T-HP, 6.5" CEILING, W/XFMR			
DECIMALS	ANGLES	DRAWN BY					
.X±3.0 [.12]	±1°	H. HE		SIZE CAGE CODE DWG. NO. REV			
MATERIAL	N/A	MECH ENGINEER		B	00PW4	FG-901468-2D	A
FINISH	N/A	TECH DIRECTOR		SCALE: 1 : 5		CAD FILE: FG-901468-2D.A.1	SHEET: 1 OF 1
DO NOT SCALE DRAWING		MFG ENGINEER		Form: QMS100206 Rev C			
PROJECTION SYMBOL		M. LUO					